

# GRAND PLANS

how making space for a piano evolved into a major transformation



**W**hat to do when your existing home no longer meets your lifestyle? In the case of Nicole and Shaun and their musically inclined family, they needed to make room for a concert grand piano that Shaun wanted to purchase from his childhood piano teacher. Unfortunately, short of sacrificing their living room, there were no options to house this gorgeous 9' by 5' behemoth.

Consideration was given to moving to a larger home—even

building new, but the homeowners didn't want to leave their wonderful and conveniently located neighborhood. With its sizeable lot, there was definitely room to expand.

In addition to creating space for the piano, the couple also wanted to incorporate a sunroom into their expansion plans so they opted to combine the two spaces. Snowballing from there, the scope of the project grew to include a major kitchen remodel complete with a butler's pantry, a new pergola-adorned patio, as well as a covered

porch housing both lounging and dining areas along with an outdoor kitchen.

Leading them through both the detailed design and construction phases was the award-winning Lancaster-based remodeler, Eric Weaver, owner of Pinnacle Design-Build Remodeling. Eric and his team at Pinnacle not only came highly

*According to Nicole, "we joke that the purchase of the piano turned into a whole home renovation".*

recommended by three trusted friends—all of whom had work done by Pinnacle—the homeowners actually got to see the quality of Pinnacle's work at each completed project. As you'll learn in the following pages, Pinnacle lived up to its stellar and impeccable reputation—and then some! In fact, the happy couple are so pleased, Nicole is already looking forward to future remodeling plans with Pinnacle—bathrooms, laundry... maybe even a pool.

## SPOTLIGHT

Featured Builder

### Pinnacle Design-Build Remodeling

(see ad on back cover)

#### PROJECT TRADE PARTNERS

**Good Painting** (see ad p. 34)

**Horizon Kitchens, Inc.** (see ad p.30)

**Indoor City** (see ad p.30)

**Martin Appliance** (see ad p. 28)

**Martin's Flooring Inc.** (see ad p. 32)

**Power-Man Electric, Inc.** (see ad p. 34)

**Zimmerman Steel** (see ad p. 26)

**P**innacle came highly recommended by three friends who used them separately and all had amazing experiences. They loved working with Eric, Kyle, Dave and the Pinnacle team. Equally important to us, Pinnacle had a reputation for finishing their projects on time.

Homeowners, Nicole & Shaun

A musically-talented family, a special place was needed to accommodate the concert grand piano and the family's other musical instruments. A grand piano needs a grand room to showcase its stature. Pinnacle designed the addition with a vaulted ceiling to promote ideal acoustics and allow for the presentation of the breathtaking crystal chandelier from Italy. Directing your attention downward, the black and white checkered floor boasts an equally dramatic effect paired with the crisp white walls with handcrafted trim accents. The spacious room is ideal for guests to gather round to take in the music and mingle. Additionally, the bank of windows exude natural light for the homeowner to enjoy as a sunroom daily and lounge on the settee.

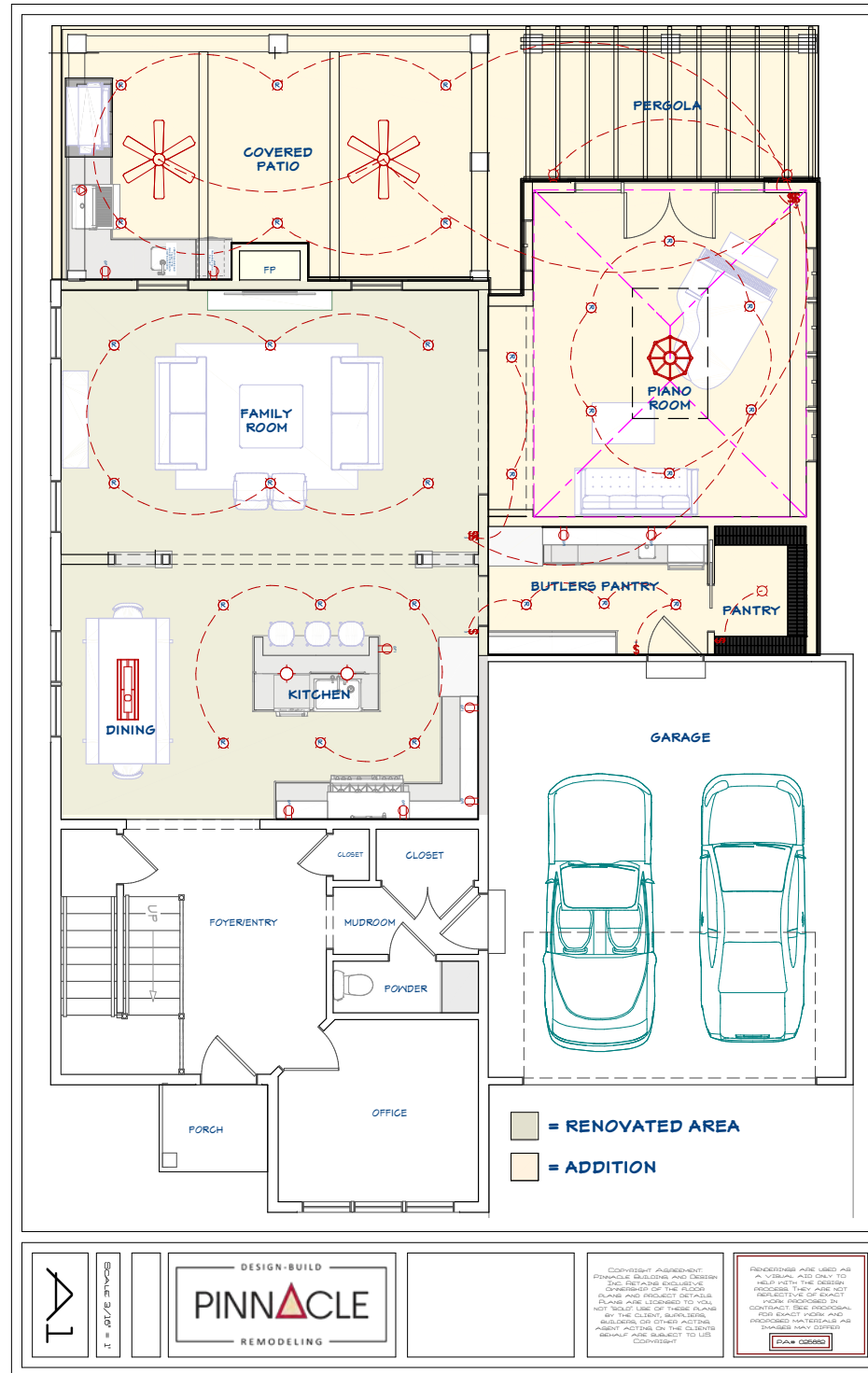


**PINNACLE**  
DESIGN/BUILD REMODELING  
*Aspire Greatness*  
(see ad on back cover)

**So what exactly makes a grand piano a CONCERT grand piano?** Measuring approximately 9' to 10' long, the concert grand has the largest soundboard diaphragm to output the greatest dynamic range. From a whisper to a thunderous roar, the concert grand also has the longest bass strings to add wonderful depth of tone.

**N**ormally, I would get quotes from three builders, but after meeting with Eric I knew we would go with Pinnacle. Eric understood the vision and the scope of the project instantly – I felt like we were speaking the same language. Kyle did a phenomenal job with the renderings and we were blown away by what they came up with and how beautifully they transformed our space. Most impressive was that they didn't compromise anything on our wishlist. They found a way to make it all happen. We were shocked.

Homeowner, Nicole

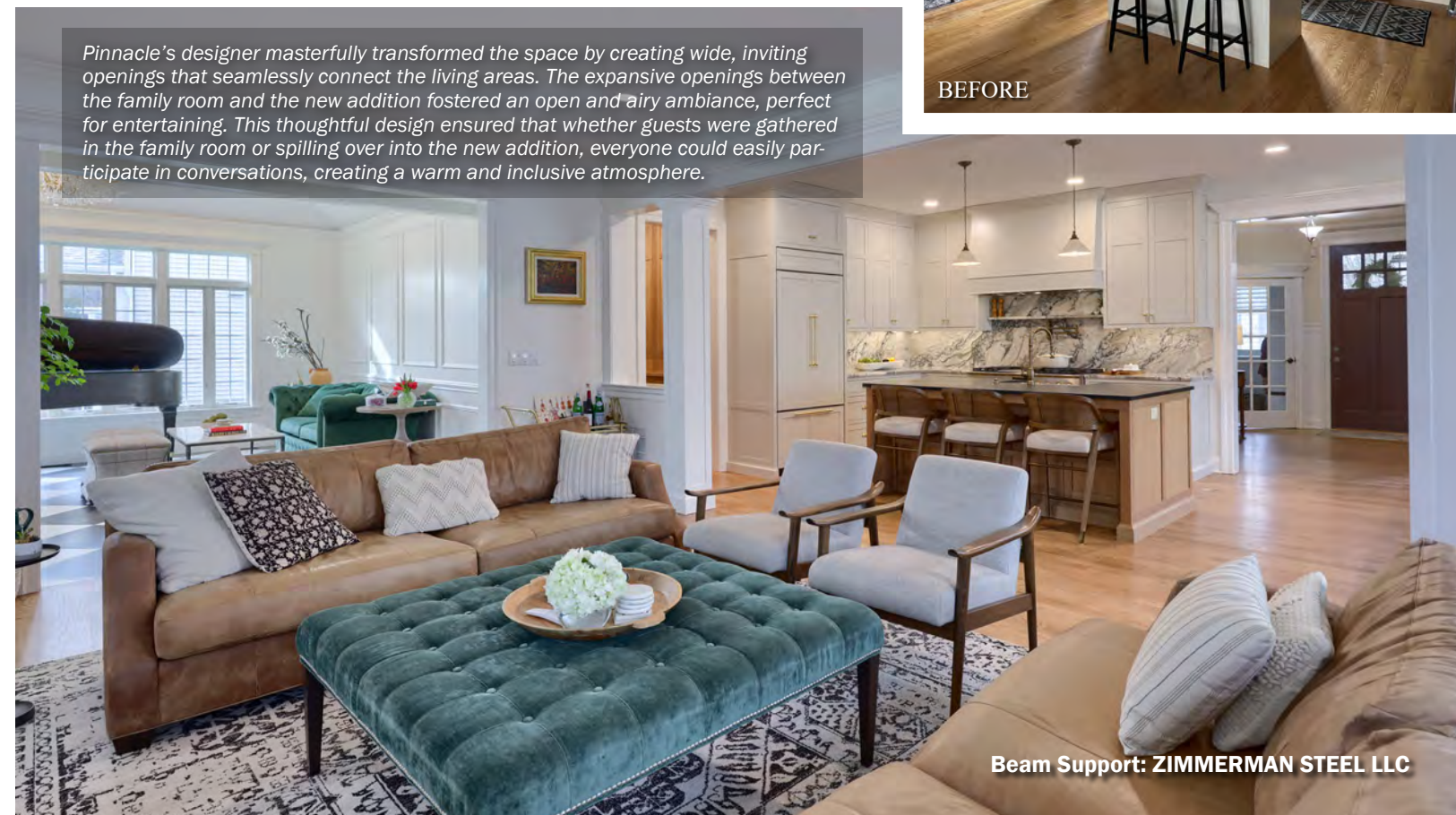


**T**he sunroom (or should I say our piano room) is such a beautiful space and a lovely addition to our home. We love entertaining in there.

Homeowner, Nicole



*Pinnacle's designer masterfully transformed the space by creating wide, inviting openings that seamlessly connect the living areas. The expansive openings between the family room and the new addition fostered an open and airy ambiance, perfect for entertaining. This thoughtful design ensured that whether guests were gathered in the family room or spilling over into the new addition, everyone could easily participate in conversations, creating a warm and inclusive atmosphere.*



**Beam Support: ZIMMERMAN STEEL LLC**



*Over 50 Years*

of bringing you  
**QUALITY PRODUCT SELECTIONS**  
with a reputation for  
**OUTSTANDING SERVICE**  
after the sale.



**MARTIN  
COMPANIES**



**MARTIN  
APPLIANCE**

**MARTIN  
FURNITURE  
& Mattress**

**MARTIN  
WATER CONDITIONING**

**MARTIN  
HEATING & COOLING  
A DIVISION OF MARTIN APPLIANCE**

**ALTOONA**  
433 Sabbath Rest Road  
**814-515-9516**

**BROWNSTOWN**  
4216 Oregon Pike  
**717-859-3131**

**CLEONA**  
308 W. Penn Avenue  
**717-273-7555**

**MYERSTOWN**  
740 E. Lincoln Avenue  
**717-866-7555**

**NEW PROVIDENCE**  
2318 Beaver Valley Pike  
**717-786-7373**

**READING**  
4850 Perkiomen Avenue  
**610-401-0390**

[martinsappliance.com](http://martinsappliance.com)

[martinheatingcooling.com](http://martinheatingcooling.com)

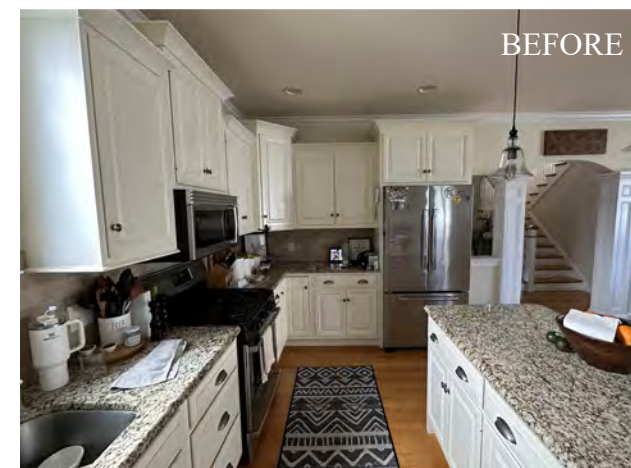
[martinfurniturepa.com](http://martinfurniturepa.com)

[martinwater.com](http://martinwater.com)



*Like our friends who recommended them, we really enjoyed working with Pinnacle and their team of subcontractors. They are all so hard working and creative and a pleasure to work with. Pinnacle has definitely set a high standard and their work proves it—we could not be more pleased with how everything turned out.*

Homeowners, Nicole & Shaun



BEFORE

**Appliances (Kitchen, Butler Pantry & Outdoor Kitchen):  
MARTIN APPLIANCE**

*A pot filler conveniently positioned above the stove makes cooking a breeze and the quartzite shelf above it provides a touch of elegance and display. The island top crafted from soapstone have a unique three-dimensional finish adding a touch of texture as well as a visual interest.*



*Tim Gible at Martin Appliance in Brownstown was extremely helpful to us in selecting our appliances. Tim is incredibly knowledgeable and I'm so happy with all of our choices.*

Homeowner, Nicole





# HORIZON KITCHENS

CUSTOM CABINETRY THROUGHOUT THE HOME

1855 Stony Battery Road, Mountville, PA 17554  
717-285-3025



Looking to preserve the existing hardwood floors during a renovation was a bit challenging as the new layout created voids in the flooring. However, the skilled restoration craftsmen rose to the challenge and meticulously repaired, infilled, and refinished the affected areas. They achieved a flawless uniform look that made it seem as though the floors had never been touched.



Cabinetry (throughout):  
HORIZON KITCHENS, INC.  
Quartzite & Soapstone Countertops  
& Backsplashes:  
INDOOR CITY



# INDOORCITY

Flooring, Design, Granite & Marble



FLOORING | COUNTERTOPS | BACKSPLASHES | BLINDS & SHUTTERS

**FLOORING SHOWROOM**

481 Harrisburg Avenue  
Lancaster  
717.397.5234

**GRANITE SHOWROOM**

1284 Loop Road  
Lancaster  
717.393.3931

**IndoorCity.com**

### APPLIANCE SPECIFICATIONS

from

#### Martin Appliance

**Range.** Bluestar dual fuel range in white and brushed brass—locally manufactured in Berks County.

**Dishwasher.** Miele Panel Ready Dishwasher.

**Range Hood.** Zephyr insert in custom hood.

**Microwave.** Monogram Microwave Speed Oven.

**Refrigerators/Freezer.** SubZero 36" French Door Refrigerator with custom panels. SubZero undercounter refrigerator and freezer drawers with custom panels.

**Outdoor Kitchen.** Lynx Sedona grill and storage components.

The custom cabinetry throughout the home was crafted from white oak, a wood prized for its subtle, understated beauty. Its light, creamy color palette lends a soft and inviting feel to the space, while the close even-grain pattern provides a smooth, tactile surface. White oak's inherent strength and durability ensure these cabinets are not only aesthetically pleasing, but also built to last, making them a highly desirable feature of the home.



During the design phase, Pinnacle suggested incorporating under-counter outlets resulting in a seamless backsplash, free from any visible penetrations. The result? An uninterrupted expanse of stunning quartzite that allows its natural beauty to truly shine and become the focal point that draws a wow-factor that Pinnacle is known for. Not to be outdone, the European stove not only serves up food, but conversation too, as it is a definite conversation piece among guests. It's an adornment of class and beauty let alone a practical kitchen appliance.







Floor Tiles (Piano Room) and Tile Backsplash  
(Butler's Pantry): MARTINS FLOORING

“Communication was great! Any questions or concerns were addressed promptly. What I loved most about Eric and Dave was their attention to detail. Both, Eric and Dave, wanted everything perfect – down to the smallest detail.”  
Homeowner, Nicole

Leading into the pantry closet is a galley way connecting to the kitchen where the butler's pantry was created. A multi-functional space, this area was designed to discreetly conceal countertop appliances and the homeowner's new favorite, a convenient coffee bar. Plenty of storage was incorporated and also, hidden in plain sight, are several drawer refrigerators for beverages. Thanks to the panel-ready cabinetry, these amenities blend seamlessly into the design, maintaining a clean and uncluttered aesthetic.



Life Happens on Your Floors,  
**MAKE THEM AMAZING.**

**BEAUTIFUL IDEAS**  
for your home or business

---

**QUALITY PRODUCTS**  
crafted to last

---

**GUARANTEED SERVICE**  
from inspiration to installation

---

 **MARTINS FLOORING**  
*We Install Confidence*  
martinsflooring.com







**GOOD PAINTING** Inc.  
CONTRACTOR  
*Quality Workmanship since 1986*

Painting • Contracting  
 Property Maintenance  
 RESIDENTIAL • COMMERCIAL  
 Fully Insured  
 PA12325

**717.738.3484**  
 goodpainting@ptd.net



“The quality of Pinnacle’s work was top notch – well exceeding our high expectations. I’d like to give a special shoutout to Dave Blank, Pinnacle’s hardworking framer, who did exceptional work keeping things on schedule. It was obvious that Dave takes great pride in his work and it was an impressive sight seeing him in action.

Homeowner, Nicole



To maximize both practicality and aesthetics in their pantry closet, open shelving was proposed as the ideal solution. To easily see and access food items makes meal preparation more efficient and the grab and go items are readily accessible for the family. Beyond mere organization, the open shelves would also provide an opportunity to create a visually appealing display. Carefully chosen containers, neatly arranged spices, and pops of color interspersed among the pantry staples transform the once-cluttered closet into an eye-catching, stylish, and organized part of the kitchen.



“True to their reputation, Pinnacle stuck to the schedule, despite some unexpected delays, mostly weather related. Nonetheless, I was told I would have a kitchen by July 31st and, sure enough, I was cooking for my family on July 31st.

Homeowners, Nicole

**POWER-MAN ELECTRIC, INC.**  
Commercial & Residential Quality Electrical Services

PA000911



serving Lancaster County  
 since 2000

No job too small!

**717.442.4800 (o) • 717.629.2059 (c)**





**H**aving the covered patio has given us a lot more outdoor time. The sun was so hot and bright that without the roof and pergola it would have chased us away all summer. The outdoor kitchen has given us another comfortable place to entertain – which we absolutely love!

Homeowner, Nicole



To fulfill the homeowner's desire for an inviting outdoor living space, Pinnacle designed and built a stunning area that seamlessly blends architectural interest with functionality. A pergola was incorporated to add visual appeal and a covered porch area provides a comfortable space for relaxation and gatherings, complete with ample room for a table and other furniture. For the avid griller, a custom-built grilling area featuring stone and porcelain countertops that brings continuity between the interior and exterior finishes.



**F**or a project of this size and the fact that we were living onsite (including 2 teenage daughters and a dog), I think it's critical to have reliable and conscientious subcontractors. Pinnacle's team were all exceptional craftsmen as well as very respectful of our space and schedules and they did a great job in keeping the jobsite tidy and clean.

Homeowner, Nicole





**F**or anyone thinking about a home renovation, my advice is to just do it! Don't wait to have the home you dream about. I kept putting our project off because of the disruption it would cause. While it was a bit disruptive, it proved to be very well worth it in the end. I only wish we had done it sooner. Having a conscientious and trusted builder like Eric and his team at Pinnacle makes all the difference – it certainly did for us.

Homeowner, Nicole



## PINNACLE

DESIGN/BUILD REMODELING



Pictured left to right are Department Heads—Kyle Rehnberg, Dave Gordon, Eric and Marie Weaver

### Eric Weaver, Owner/President

Eric has been in the building industry for almost 36 years. His start was in the drywall trade and then in 1999 he and his wife, Marie, started Pinnacle where he is involved in the day-to-day functions of running the company, sales, project management, and creative design.

### Marie Weaver, Owner/Chief Financial Officer

Marie has 34 years of construction industry experience including roles such as administrative assistant, accountant, event planner, and currently is Pinnacle's Chief Financial Officer as well as assisting with marketing and advertising.

### Dave Gordon, Job Site Supervisor

Dave got his start in the building industry in the late '70's. Since then he has many years of hands-on experience. In the late '80's he started managing the construction of residential home building. Dave also has experience in commercial construction including restaurants, mall build outs, and multi-unit housing. At Pinnacle for 12 years, Dave has the integral role of handling communications between client, field, and office, as well as tradesmen and materials, overseeing construction, safety, and overall quality.

### Kyle Rehnberg, 3D CAD Technician

Kyle has been in the construction industry for 22 years—20 of which with Pinnacle. Kyle has a key role in every project Pinnacle produces and has aided in the design and construction of many award-winning projects throughout tenure at Pinnacle. As a result of his attention to design, detail, and function, Kyle continues to excel at creating personalized projects.

