

# Paving the Way

the scoop on standard paving



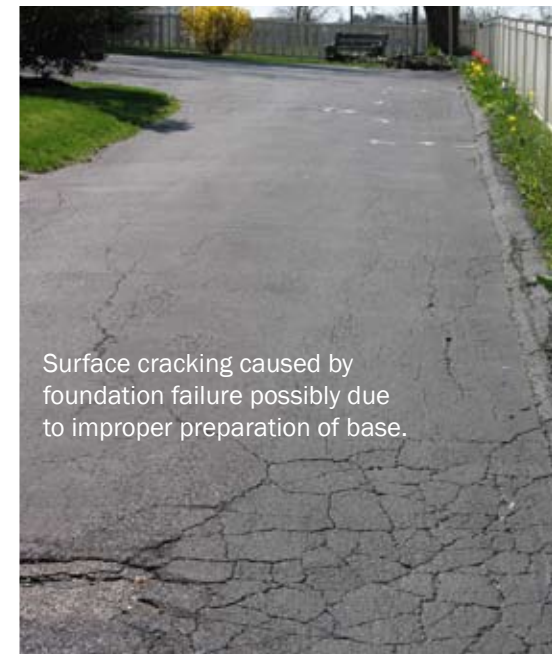
**Jay Miller**  
 Director of Paving  
 B.R. Kreider & Son, Inc.  
 Manheim

a driveway, walkway or other surface that you'll be proud of for many years to come.

**Site Preparation.** Building a new driveway requires several important steps. A grade design is essential for controlling the flow of surface water drainage. A solid foundation is achieved with proper excavation and soil compaction, and installation of an adequate stone base of 6

inches or more. An application of 2" of compacted asphalt base (coarse) material will develop an established base to lay the compacted wearing (fine grade) asphalt material. A "rule of thumb" is a quality-built driveway should last 15 to 20 years.

**Quality.** Experienced professionals use road-type pavers and recommend a completely compacted leveling course of asphalt. All transitions are notched and all joints are sealed. Your paving will be solid, sealed against water damage and worry free.



Surface cracking caused by foundation failure possibly due to improper preparation of base.

**Beauty.** Curb appeal is a bonus to your investment. Giving attention to details of straight, tamped edges, defined radiuses and proper compaction will result in a smooth, beautiful surface, which adds value to your home.

Asphalt Paving Material is very versatile, as well as durable and long-lasting. The application in the residential environment is excellent for driveways, walkways, patios, foundation pads, tennis courts, basketball courts and more. The most recent innovation of asphalt material is the application of "StreetPrint",



63 Kreider Lane, Manheim, PA 17545 | [www.BRKreider.com](http://www.BRKreider.com) | 717-898-7651

B.R. Kreider and Son, Inc. is a premier site management company based in Manheim and serving the Susquehanna Valley region. We offer a variety of residential and commercial services, including site management, excavating, paving (driveways, parking lots, streets, and more).

**Creating a Pathway of Trust.** B.R. Kreider & Son, Inc. has a paving team that combines extensive field experience, expert team management and state-of-the-art equipment. We can make your driveway or walkway picture perfect.

**When Your Property Needs Help.** B.R. Kreider & Son, Inc. offers a full list of residential excavating services. Since 1936 we've been grading, excavating, trenching and digging around residential homes and developments.

**We Build on Decades of Experience.** As Site Managers, we enhance the process of planning & managing a site/project for its current, intended purpose, using a depth of experience to find the most cost-effective, time efficient and expedient processes available.

B.R. Kreider & Son, Inc. is a family-owned business founded by Benjamin R. Kreider in 1936, continued by his son, Elvin Kreider. Today, the third and fourth generations employ over 150 employees ready to serve the surrounding community with a primary focus on caring for each customer's needs. Our salesmen are available to guide you through the process of making your projects a reality.

**A**t B.R. Kreider & Son, Inc., we understand that your home is more than just a place to live—it's an investment. An asphalt paved driveway or walkway should be picture perfect, durable and long lasting, enhancing your property as a return for your investment.

## Behind the Beauty of the Asphalt Paved Surface

**Design Investment.** Our team of experts will carefully guide you through every step of the process, giving you





an imprinted process added to the compacted asphalt creating a textured, decorative surface.

by imprinting a design on the asphalt, providing a choice of design and color to compliment your environment. Creative! Unique!

StreetPrint is a revolutionary, patented application process that produces realistic brick, slate, stone and other design

## Decorative Paving

“StreetPrint” is our most recent, innovative product in the paving industry. One can now personalize your pavement

The only limit to designing with “StreetPrint” is your imagination.

# Breaking New Ground

The professional team of **B.R. Kreider & Son** will work with you during your residential project:

- Site Management
- Site Utilities
- Residential Paving
- Driveways
- Residential Excavation
- Ponds
- Landscape Walls
- Basement Excavation
- Decorative Paving

Over 70 years of experience in residential and commercial excavation and paving will put your project on a solid foundation.

[www.brkreider.com/myhome](http://www.brkreider.com/myhome)



63 Kreider Lane  
Manheim, PA 17545  
(717) 898-7651

[www.brkreider.com/myhome](http://www.brkreider.com/myhome)

## Questions to Ask

1. Will appropriate notches be milled into the existing asphalt surface to allow for a smooth paving transition when your new paving is installed?
2. If necessary, will asphalt that is too high be removed to provide for the proper depth of the new paving? This will provide appropriate water drainage when your paving is complete.
3. Are there any severely broken and/or deteriorated sections of asphalt in your existing paving? Will this be appropriately repaired prior to installing new asphalt?
4. Will your grass edges be trimmed from the sides of your driveway to find the true edge in order to give you the maximum amount of width and length?
5. If there are existing structural cracks, does your contract include the use of a Petro Tac or Petro Mat material to help prevent reflective cracking through the new paved area?
6. Will patches be done in stone areas and other areas where asphalt was removed? Are the patches a minimum of 2-inch binder (base course) asphalt? Is this 2-inch the thickness of the asphalt before or after compaction?
7. Is your current driveway (paved area) uneven? Does your contract cover a leveling course of asphalt to level the surface prior to the final top course?
8. Final Top Course — Will the final top course be a true 1½ inch compacted mat of a Fine Top Asphalt mix? Will the surface be free from ridges, creases, and other surface marks? Will all edges be nicely tamped?
9. In many cases, the new paving will meet a road and create a joint. Will this joint be sealed with an appropriate asphalt joint sealer?
10. What is the workmanship and quality guarantee on your paving? Is it one (1) year?
11. What type of paver will be used? A road-type paver as opposed to a box-type paver will give a more uniform and compacted mat of the asphalt material.
12. Will vibratory rollers and compactors be used to achieve maximum compaction? Compaction determines the longevity of any asphalt surface.
13. What type of paving do you want? Least cost or best quality for dollars spent?

StreetPrint can be applied to newly laid asphalt or existing asphalt that is in good condition and under five years old. Adding an address to your surface is neighborhood-friendly and a bonus for the local emergency systems.

effects on an asphalt base. StreetPrint combines the flexibility and strength of asphalt with leading-edge coating technologies which results in a cost-effective, durable surface with low maintenance requirements. Charm and character is added to any residential, commercial, or municipal application.

R&A

