

Kitchen Cabinetry

the possibilities are endless



by **Karen Benn**
Design Technician
Red Rose Cabinetry



TRANSITIONAL STYLE

Remodeling your kitchen or any room in your home may seem like a daunting project when you first consider it but the rewards in return in value and the aesthetics of just having a new room to admire and spend time in are well worth the efforts put forth.

Once the decision has been made to go ahead with your project and you have an idea of what you would like to do,

it's time to consider what type of fits and finishes you would like.

One of the most important decisions you'll make is what type of cabinetry you're going to use. Custom cabinetry is a great choice as you will not be limited by sizes, finishes, door styles, etc. With custom cabinetry, the possibilities are virtually endless. Think of it as fine built-in furniture that is built specifically for your space. One of the major benefits of custom cabinetry is the detail that the manufacturer goes into to provide you with the finest quality and finish possible. The finish on custom cabinetry is second to none. Doors and wood components are hand sanded and careful attention is paid to the application of the stain or paint and the final top coat. The result is a fine, smooth, durable finish that, with proper care, will maintain its beauty for many years.

Contemporary, Traditional, or Transitional— the choice is yours and the style you choose will make a personal statement.

Some of the choices you can expect to make are door overlay, door style, wood specie, finish—whether it be stain or paint or a mix of both —and hardware. All of these compo-



TRANSITIONAL STYLE

Red Rose Cabinetry, Inc. is a full-service custom cabinet manufacturer located in Lancaster County, PA. Established in 1985, Red Rose Cabinetry has a long tradition of transforming wood into breathtaking custom kitchen and bath cabinets as well as entertainment centers, wet bars, home offices and anything else you can dream of.



will draw from their years of knowledge to help you plan and design your kitchen. Our highly skilled craftsmen will artistically create your custom cabinets, making them become a reality. And our professional and courteous installation team will make sure the final product fits perfectly in your home.

Custom cabinets can be made to your exact size requirements from your choice of wood, colors, stains and finishes to achieve the look you desire. Our experienced designers

In addition to custom handmade cabinetry, we also offer semi-custom and stock cabinetry lines to help meet any budget. A full selection of countertop choices includes Granite, Quartz, Solid Surfaces, Laminate and Cultured Marble.

740 Rothsville Road, Lititz ▪ 717.625.4456 ▪ www.RedRoseCabinetry.com

nents will go together to help achieve your final look.

Let's go into some of the above choices in greater detail...

Door Overlay is how the doors of your cabinetry lay on the frame of the cabinet. Beaded or flush inset is where the door actually sits inside and flush with the frame of the cabinet. This is often a good choice for either *Traditional* or *Transitional*. Doors can also overlay the frame of the cabinet several ways— $\frac{1}{4}$ " & $\frac{1}{2}$ " are often referred to as *Traditional* overlays meaning the door overlays the frame of the cabinet box by either $\frac{1}{4}$ " or $\frac{1}{2}$ " and you can see more of the frame of the cabinet outside of the door. As the name implies, these overlays are commonly used in traditional or transitional rooms. For a more *Contemporary* look, there is the full overlay which has a $1 \frac{1}{4}$ " overlay. When the door sits on the frame of the cabinet box very little of the frame is visible. Another choice for a truly contemporary look would be European or *Frameless* in which the cabinet is built with $\frac{3}{4}$ " framing and the door is flush with the outside of the cabinet box.

Door Style is the actual look of the door itself. There are many options to choose from such as panel raise, framing bead and edge profile to design your door and achieve the look you desire. More contemporary styles include frosted glass doors and metal framed doors.

Wood Specie, of course, is the wood you choose to have your cabinets made from—Oak and Cherry are typically traditional choices, while Maple can be either traditional, transitional or contemporary depending on the finish



CONTEMPORARY STYLE



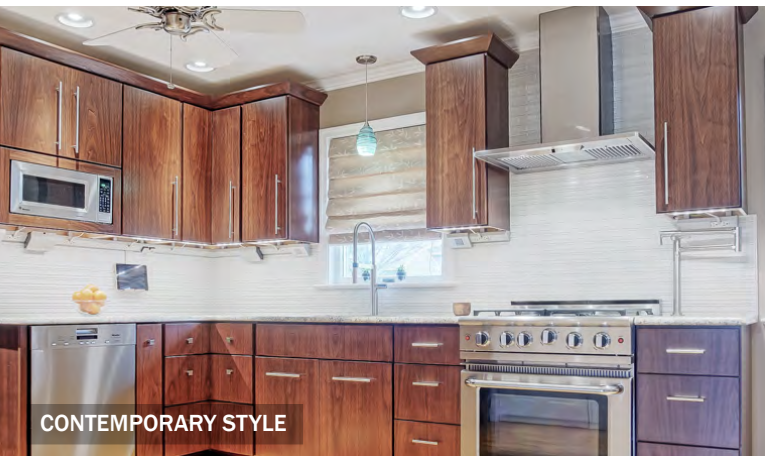
TRADITIONAL STYLE



TRADITIONAL STYLE



CONTEMPORARY STYLE



CONTEMPORARY STYLE



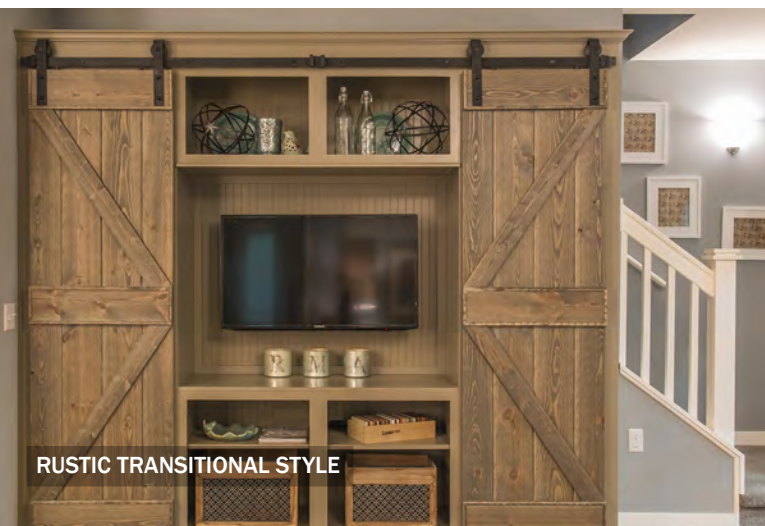
CONTEMPORARY STYLE



TRANSITIONAL STYLE



TRADITIONAL STYLE



RUSTIC TRANSITIONAL STYLE



RUSTIC TRANSITIONAL STYLE

and door style selected. Hickory or Alder could be used for more rustic appearances such as in a log cabin. MDF has become a popular choice for painted doors as it is not so prone to the finish cracking at the joints that occurs on painted wood doors.

When it comes to **finish**, there is much to choose from. Stains, stains with glazes, paints and paints with glazes are among your choices. You can choose to mix stains and paints in the same room. You may also choose to add some distressing and heirloom applications to give an aged appearance. The color palette is endless and only your imagination will hold you back.

Decorative hardware is available in many styles and finishes to add the final touch to your cabinetry to accomplish the look you are trying to achieve.

All of this may seem overwhelming but don't be discouraged. To help narrow down your choices and to give you some ideas, the internet is an invaluable resource. Working with a design professional is also very helpful. When it comes time to meet with the designer be sure to take pictures of what you like with you as well as your ideas of what you would like to incorporate in your room. Once your new custom cabinetry is installed you will feel such a sense of accomplishment and you will have beautiful new cabinetry to complement your home and enjoy for years to come.

For more information, please don't hesitate to give us a call. Better yet, stop in and visit our showroom and speak to one of our experienced designers. Whether you are redoing your kitchen, bathroom, home office, or other area of your home in which built-in cabinetry is desired, we can design the perfect cabinet and countertop configuration to maximize your available space.

R&A

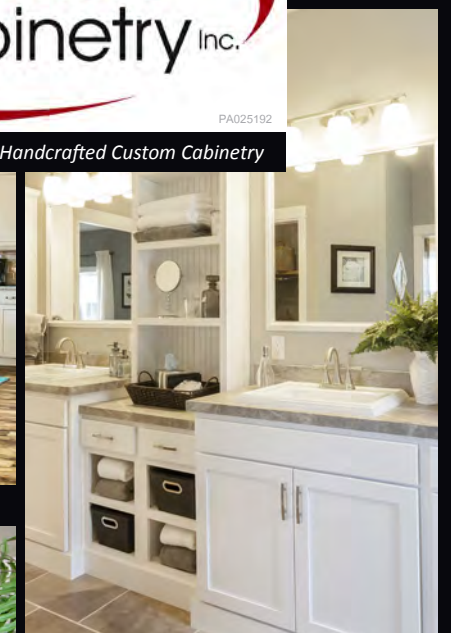
Looking for the Kitchen, Bath, Office, Entertainment or Hobby Center of Your Dreams?



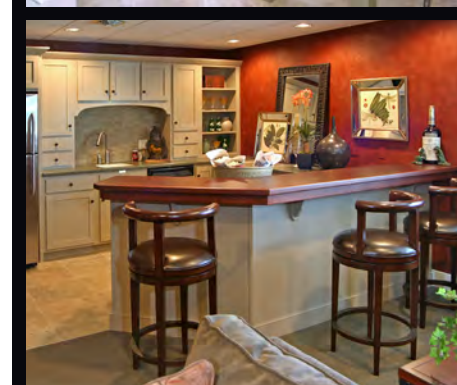
Manufacturer of Fine Quality Handcrafted Custom Cabinetry



Call us for an appointment today!



717.625.4456



Remodeling or new construction, our experienced sales and design staff will help plan and design your cabinetry needs. Our highly skilled craftsmen will create your fine quality handcrafted custom cabinetry right here in our Lititz facility. We also offer several lines of stock cabinetry.

740 Rothsville Road, Lititz ■ www.RedRoseCabinetry.com